



Professional 3D printer

DeeRed

**Ideal for fast prototyping
to finished manufacturing**

- Multicolor print – dual extruder
- Extensive build volume
- Fully enclosed print chamber
- Ease of use – includes print profile templates

Technical specifications:

Print technology	FFF
Build volume	400 x 600 x 800 mm
Number of extruders	2
Print bed	heated, glass
Print accuracy	0.1 mm
Nozzle diameter	0.6 mm
Layer thickness	0.1 / 0.2 / 0.3 mm
Max. print speed	100 mm/s
Max. move speed	200 mm/s
Printer control	7" Touchscreen
Interior lighting	LED
Integrated power source	230 V / 2.6 kW
External dimensions	1150 x 750 x 1950 mm
Weight	250 kg
Inputs	ethernet, USB (mass storage)



ENORMOUS BUILD VOLUME

Prints large objects - eliminating the need to assemble a complex design item from smaller pieces.



GREAT VALUE / COST RATIO

Offers a larger build volume at a comparable price to printers with smaller build volumes.



DUAL EXTRUDER

Uses two different types of material; your design can include water-soluble support structures, allowing for complex prints.



STOP & GO FEATURE

Pause and continue later offers flexibility in the 3D printing workflow.



HD 3D PRINTING

3D printing has gone high definition. Print resolution can be set up to 100 microns.



SAFETY FIRST

Designed for safety making DeeRed ideal to use in varied applications.



A professional, fully-automatic 3D printer designed with European craftsmanship.

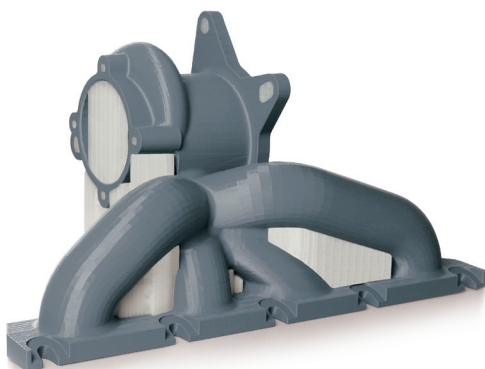
Whether you are a manufacturer or designer, 3D printing offers many advantages: it is fast and economical for prototyping, creating models and manufacturing finished parts, subassemblies or tooling which means your business can be competitive in today's challenging market. A fast time to market is important, but perhaps equally

or more important, is the quality of the print. DeeRed is designed to meet your most rigorous 3D printing needs. With resolutions of up to 100 microns, DeeRed is capable of printing at high speeds thanks to the unique location of its print head.

Ease of Use & Safety Features

A fully automatic calibration system for the heated print bed eliminates complicated printer set up. DeeControl, our proprietary control software, takes your unique design files and readies them for 3D output in a few easy steps. DeeControl also comes with print profile templates for efficient printing using pre-set parameters. The printer control can be accessed through a large, touch screen with intuitive options. The combination of cutting-edge hardware with unique software is one of the reasons DeeRed is able to give you innovative controls and extremely fine print quality with an ease of use that lets you focus on your design instead of printer operation.

DeeRed includes a webcam and Ethernet connection for remote monitoring of the printing process. Magnetic door locks and the ability to prevent access to the printer while in operation contribute to safe use. The enclosed printing chamber ensures you can print almost anywhere without concern for external conditions and also provides safety from moving parts while in operation. The removable print platform makes it easy to detach the finished object and prepare for the next print.



DeeRed sample PLA printout: turbo machine part with PVA water soluble supports.

Key Application areas:

- Design engineering
- Architectural design
- Automotive parts, subassemblies and tooling
- Model making
- Product design
- Education
- Service bureaus
- Customized manufacturing